



FLVC

Flintshire Local Voluntary Council
Cyngor Gwirfoddol Lleol Sir Fflint

VOLUNTARY VOICE

ISSUE 02 - 2015

WWW.FLVC.ORG.UK

IN THIS ISSUE

- 2** In This Issue / What's New at FLVC ?
- 3** Notes From Ann
- 4** Funding
- 6** Volunteering
- 7** Events
- 8** Health, Social Care and Wellbeing
- 10** Community
- 13** Training
- 14** For Info
- 15** Money Matters
- 16** The Printroom / And Finally...



Front Cover: St Mary's Church, Mold
by Barrie Potter - www.barrie-potter.co.uk

FLINTSHIRE LOCAL VOLUNTARY COUNCIL

Corlan, Mold Business Park,
Wrexham Road, Mold,
Flintshire CH7 1XP

info@flvc.org.uk - 01352 744000

Flintshire Local Voluntary Council

- Our Vision:** FLVC's vision is of a strong, sustainable and effective voluntary and community sector, involving people and serving Flintshire people
- Our Mission:** FLVC's mission is to support, develop and promote voluntary and community activity in Flintshire and to strengthen the capacity of voluntary and community groups to contribute to the quality of life of Flintshire people and communities.

WHAT'S NEW AT FLVC?

We have a new tenant within the building – North Wales Energy Advice Centre. North Wales Energy Advice Centre is a not for profit social enterprise whose main aim is to assist people to live in dry, affordably warm homes and reduce carbon dioxide emissions responsible for climate change. The centre's experienced staff provide free and impartial advice to members of the public, community organisations and small businesses on all aspects of energy use and energy saving, including renewable energy. The centre has been around for about 12 years and works with local authorities, especially Flintshire Council, local community organisations and local reliable contractors to deliver a range of services. The centre is most easily contacted through the freephone advice line, 0800 954 0658, and is happy to support local groups and events, provide talks and training and discuss and assist with any housing or energy related projects.

NOTES FROM ANN

Welcome to the latest edition of Voluntary Voice. The new format of our Newsletter has been very well received – thank you for your feedback. Please continue to submit any articles you wish to be considered for future editions.

The new season and the new financial year will hopefully energise us all into looking at new opportunities for development of the Third Sector, however 31st March also brought to an end a number of joint initiatives that FLVC have been proud to be associated with.

- The B2C Partnership has created mutually beneficial relationships between business and communities and has been an excellent example of how the six County Voluntary Councils (CVC's) work together to deliver across North Wales, learning and sharing knowledge and best practice with local businesses. The Big Lottery funded project has supported 1877 Third Sector groups through support from over 11,000 hours of support donated by local businesses. I attended an event celebrating the achievements of the project in February at which projects from across North Wales were showcased.
- The Wales Co-operative Centre's Get Online Wrexham and Flintshire Project has helped to combat Digital Exclusion by delivering IT training across a wide range of accessible locations in Flintshire and Wrexham. It has also enabled enterprises and organisations to benefit from sound technical advice that helps them to embed the use of technology into their future business planning. Staff have worked closely with Job Centre Plus, Disability Groups, Tenant Associations, Communities First, Older Persons Networks, Libraries, Vision Support and Red Cross to spread the word about Digital Inclusion, and those of you who were at our AGM will remember the video explaining the difference IT has made to the life of Alison, with the help of trained volunteers

Our thanks and best wishes go to the staff who will be moving on to pastures new. The projects have been hugely successful and have highlighted the need for continued support for third sector organisations to work more closely with the private sector and to keep up to date with the pace of IT development.

- We were delighted to hear the news that a collaborative bid between ourselves, DVSC and Conwy CVC (lead partner) was successful in its application to administer the Gwynt y Môr Community Fund. Gwynt y Môr is the world's second largest offshore wind farm, located more than eight miles off the North Wales coast and the organisation has awarded £19million of Community funding for the lifetime of the project (made available through annual payments of £768,000). Timetable and application information to follow – more information on page 14.
- Flintshire County Council's Community Asset (CAT) Transfer process continues to progress and FLVC have provided training to organisations interested in developing CAT projects within their local community. Please contact us for more details.
- A final note - we will be advertising our revised training programme through our Newsletter and regular mailing to members. We look forward to meeting you at an FLVC event very soon.



Chief Officer

01352 744028

ann.woods@flvc.org.uk

“The new season and the new financial year will hopefully energise us all into looking at new opportunities for development of the third sector.....

FUNDING

FLINTSHIRE COMMUNITY ENDOWMENT FUND

AIMS :

The Flintshire Community Endowment Fund aims to support a number of initiatives:

- Projects that support the educational development of school aged children and young people
- Projects that support the educational development of children in the early years
- School based projects that support health matters and healthy living
- Educational attainment projects including lifelong learning
- Education inclusion projects with support for individual students in the form of bursaries, travel assistance, sport, prizes for attainment and educational materials or other resources

WHO CAN APPLY:

Students up to and including the age of 25 years who are currently resident in the Local Authority area of Flintshire, provided that the initiatives do not fall within statutory provision.

ALEC DICKSON TRUST

Grants are available to help young people to run a project in their local area anywhere in the UK that involves local volunteers up to a maximum of £500.

For further information please go to:

www.alecdicksontrust.org.uk

E-Mail: alecdicksontrust@gmail.com

STATUTORY PROVISION

- Groups and organisations in the Local Authority area of Flintshire running projects which fall outside statutory provision (e.g. after school clubs, breakfast clubs, gardening projects etc).
- Preference will be given to applicants who best show how they meet the Fund's objectives and priorities, and who have not previously received support from this Fund.

GRANTS AVAILABLE

Individuals and organisations can apply for grants of up to £750 .

HOW TO APPLY

All applicants must complete an application form which can be downloaded from the Foundation's website www.cfiw.org.uk. Alternatively you can contact the Foundation on 02920 379580 or email mail@cfiw.org.uk to have an application pack sent out to you.

Searching for
funding for
your project?





THE PRINCE'S COUNTRYSIDE FUND

The Prince's Countryside Fund is currently accepting applications from projects in the UK that can have a long-term positive effect on rural communities.

The Prince's Countryside Fund was established to support the sustainability and protection of farms and rural communities throughout the UK. The aim of the funding is to have a long-term positive impact on rural communities, helping those that live and work there to sustain the countryside by tackling key rural issues.

Link to guidelines: <http://princescountrysidefund.org.uk/>

TESCO CHARITY COMMUNITY AWARD

The Tesco Charity Trust has been in existence since 1987 and supports local charities and not for profit organisations. The profit we give goes towards providing practical benefits, such as equipment and resources for projects that directly benefit health, environmental sustainability or opportunities for young people in the local communities around our stores in the UK.

To find out about other ways Tesco supports local communities to make an application please visit our website: www.charitytrustcommunityawardsapplications.co.uk

HENRY SMITH CHARITY

Main Grants and County Grants Programme Financial assistance for projects involved with health and social welfare in the UK.

Main Grants Programme - The Main Grants Programme is for grants of £10,000 per year or over. There are two types of Main Grant:

- Capital Grants - One off grants for purchase or refurbishment of a building or purchase of specialist equipment.
- Revenue Grants - Grants of up to three years for running costs (including salaries and overheads), or the running costs of a specific project (including staffing costs).

County Grants Programme - The County Grants Programme is for one year grants of between £500 and £10,000 and grants of up to £20,000 spread over either two or three years. Grants can be used towards running costs, salaries, project costs, or one-off capital expenditure such as building refurbishment or equipment.

Link to guidelines: <http://www.henrysmithcharity.org.uk/grant-programmes.html>

SPORT WALES COMMUNITY CHEST SCHEME

Fancy £1500 towards your community sport project? Community Chest offers grants of up to £1500 in any 12 month period for activities that encourage more people to become more active, more often and raise the standards of existing activities.

WHO CAN APPLY ?

The scheme is open to any group as long as they hold a bank account in the organisations name. For further information on eligibility etc or to download an application form please go to:

www.sportwales.org.uk/communitychest

VOLUNTEERING

JOHN MUIR AWARDS



The John Muir Award is an environmental award that encourages people of all backgrounds to connect, enjoy and care for wild places through a structured yet adaptable scheme.

THE AWARD

The Award is not competitive but should challenge each participant. Taking part will develop an understanding of, and responsibility for, a chosen wild place or places. For some this will offer an opportunity to explore values and spirituality.

This course is proving increasingly popular - especially as the weather is improving, people are feeling more inclined to venture outdoors.

WELLBEING

The link between spending time in nature being active outdoors and mental wellbeing is being understood and experienced more and more.



On average 12 people have attended each session and some of the activities have included:

- Litter-picking around Flint Castle
- Discovering Flintshire Coastal Path, walking from Flint – Greenfield (6 miles). Quite a challenge for some!
- Bulb-planting and hedge-planting below Mold cemetery, as part of the 'Mold Spring Clean'
- A day in Mold Community Garden, shifting compost & painting fences
- Creating a woodchip path at Loggerheads

For more information, get in touch with: jill.blandford@flvc.org.uk

The link between spending time in nature/being active outdoors and mental wellbeing is being understood and experienced more and more.



This is our fantastic group of volunteers discovering, exploring and conserving out and about in our beautiful country of Flintshire, taking part in the JOHN MUIR AWARD.

EVENTS

CLWYD ALYN HOUSING ASSOCIATION (CAHA)

The team from Clwyd Alyn Housing Association (CAHA) Women's Aid held their own 'Paint it Purple' campaign at Flint Retail Park to mark International Women's Day recently.

Staff from the Association, organised banners and leaflets to promote the work of CAHA Women's Aid who manage a refuge and also have an office and drop-in centre in Holywell.

They also gave out cakes and flowers, inviting members of the public to pledge their support with a purple handprint.

"We'd really like to thank everyone who stopped to find out more and who support the vital work of Women's Aid organisations around the country, and also thank Jackie Goundrey, Domestic Abuse and Sexual Violence Coordinator at Flintshire County Council, for supporting the event," said Linda Hughes who manages the service for Clwyd Alyn Housing Association.

Jackie Goundrey said: "International Women's Day is a time to uphold women's achievements, recognize challenges and focus greater attention on women's rights and gender equality. It envisions a world where each woman and girl can exercise her choices, such as participating in politics, getting an education, having an income and living in societies free from violence and discrimination."

CAHA Women's Aid services can be accessed by phoning 01352 712150 or the All Wales Domestic Abuse and Sexual Abuse Helpline on 0808 8010 800. Referral can also be made via other agencies such as Social Services or North Wales Police.

While Clwyd Alyn Housing Association Women's Aid currently provides services for women and children only, both men and women can access support and advice via the All Wales Domestic and Sexual Abuse Helpline 0808 8010 800.



MACMILLAN CANCER SUPPORT'S NIGHT IN - DIARY NOTICE

May 2015

Across Wales - At Home



Macmillan's Night In is simply about having friends round for a catch up, a laugh and something to eat and drink. There's no 2am taxi to find and no queue at the bar – instead Macmillan wants you to enjoy some quality time in with your favourite people. We're asking people across Wales to sign up to host an event to help us to support people affected by cancer.

Now in its third year, Night In is sponsored by Sheila's Wheels and a fun, hassle-free way to help raise money for Macmillan and ensure no one faces cancer alone. Last year Night In raised well over £2million.

There are a million reasons for a Night In this May. To make a difference, simply register your interest at <http://nightin.org.uk> wait for your free Night In kit and ask your friends to donate whatever they can afford to your Night In.

HEALTH / SOCIAL CARE & WELLBEING

PARTNERSHIP WORKING FOR HEALTH AND WELLBEING

ALZHEIMER'S SOCIETY COMMUNITY SUPPORT SERVICE

EMPOWERING PEOPLE TO MAINTAIN CONTROL OVER THEIR LIFESTYLE.

Mrs C was diagnosed with early onset Alzheimer's disease in 2010 and had to retire early from her career as a sports coach on the grounds of ill health. In the latter half of 2014 Mrs C was becoming increasingly frustrated and feeling unhappy, as she was no longer able to continue exercising independently.

At the point of referral to the Alzheimer's Society Community Support Service she had been inactive for some months and had low motivation towards day to day living.

Working with the community support worker, Mrs C researched some local exercise classes and has now been enabled to attend a weekly over 50s Zumba class. Alzheimer's Society received funding from ICF to provide the community support service in Flintshire.

Lisa Jones the Community Support Manager says this about the service:

'Our Community Support Service provides personalised one to one support for people with dementia to continue with daily living activities and to participate in leisure and social activities when they may no longer be able to do so without support.

Support and activities can be provided at home or in the local community to suit individual needs. Our trained staff aim to help people feel supported, and maintain independence, choice and control over their life.

It is also important to remember that involvement in this service is beneficial to the carer as they will have some respite each week. Between November 2014 and early January 2015, 33 referrals had been received, with 14 individuals going on to receive the community support service.

LOCAL INFORMATION:

If you would like to know more about the Community Support Service, or if you have questions about dementia, please contact Lisa Jones, Community Support Manager on 07525 822 489 or email :

l.jones@alzheimers.org.uk

QUOTE FROM MRS C :

"I thoroughly love the dancing and really look forward to the weekly class, I'm feeling like I'm in contact with people and the exercise is keeping me fit!"

FIRST IN NORTH WALES - HOARDING PROJECT

Flintshire County Council's Intermediate Care Fund has funded a new hoarding project implemented by Flintshire Care and Repair.

This exciting new project takes a unique approach to the issues of clients who have been hoarding at home and assists them with their hoarding tendencies to provide practical help and support to readdress the balance in their lives and put choice back into their control. All clients receive a holistic assessment of their personal circumstances and their properties. They are signposted for support to other services where required.



HOARDING PROJECT CONT.

HOW IT WORKS

Care and Repair offer an independent, expert, holistic hoarding service.

This service focuses on the causative factors of the hoarding tendencies and the needs of the client for success. It takes into consideration all of the factors relating to legislation and support needs for the individual and balancing it with the needs of the Local Authorities, RSL's and home owners responsibilities.

Multi factorial risk assessments and information assessments are carried out on each individual case and a holistic plan of action mutually agreed will be instigated.

Statistics show that after clearing a property 80% re-board because the causative factors are not addressed.

This scheme is unique in that it seeks to get the client/tenant to identify factors and put a support plan into action. This will involve de-cluttering and cleaning of the property and support packages arranged for the future. It has the support of an external consultant and the backing of Betsi Cadwaladr Health Board, North Wales Fire & Rescue Service and Flintshire County Council.

This service has impacted on expediting hospital discharge, prevention into hospital, prevention of eviction and reducing trips and fall hazards. The project has significantly reduced potential fire hazards and homes unfit for human habitation. All clients have reported an increase in their mental health and well-being.

For more information please contact enquiries@flintshirecr.co.uk or telephone 01352 758700.

MOVING TOWARDS THE SINGLE POINT OF ACCESS FOR HEALTH, SOCIAL CARE AND WELL BEING IN FLINTSHIRE

Un Pwynt
Mynediad



Single Point
of Access

As you may be aware, a partnership between Flintshire local authority, BCUHB and FLVC is looking to establish a new Single Point of Access in Flintshire.

The Single Point of Access (SPoA) aims to be a new, effectively co-ordinated single point of access, single point of assessment and care co-ordination for preventative and rehabilitative work across health and social care community services for adults in Flintshire.

The SPoA will be a new way for adults, across Flintshire, to gain access to information, advice and assistance about community health and social care services, by contacting just one telephone number.

The initial phase of the SPoA development will see Flintshire's First Contact Team move into Preswylfa, Hendy Road, Mold CH7 1PZ on April 29th 2015. From this date the team can be contacted on 01352 803444.

Lynze Rogers will work within the team as the Third Sector Co-ordinator. Lynze will provide a central resource for raising the profile of the non-statutory sector services available within the county. This will enable more informed advice, guidance, and signposting within the SPoA and beyond.

- As Third Sector Co-ordinator, Lynze will be looking to ensure that all advice and guidance to service users is relevant and accurate. This role will be supported by the Health and Social Care Facilitator and staff team at FLVC. Key elements of the role include:
- Raise the profile of, the provision of well being services, from third sector organisations.
- Provide information on third sector provision to the SPoA team and other teams in social services and health.
- Keep the Flintshire Well Being Directory up to date.
- Work with third sector organisations to ensure appropriate referral systems are in place from SPoA .

Lynze stated "To enable me to be effective in this role it is important that I am up to date with third sector and community based service provision, which supports people's well being.

"If you would like to tell me about the services your organisation provides or come and speak directly to the Single Point of Access (SPoA) team, please contact me on 07867 451826 or alternatively you can email me at lynze.rogers@flvc.org.uk

COMMUNITY

BRITISH EMPIRE MEDAL AWARDS

Derryn Blanchard and family with Henry Fetherstonhaugh, the Lieutenant of Clwyd, receiving the British Empire Medal at a recent ceremony at Bodelwyddan Castle. Derryn was nominated for her dedication to the Holywell Autumn Club which ensures that member benefit from a wide range of social activities whilst giving them the opportunity to get together for regular meals and a chat.



The Club ensures that older people in Holywell do not feel isolated or excluded, with Derryn ensuring that the well-being of her members are met when needed with a friendly phone call, a hospital visit, and always going the extra mile with her enthusiasm and dedication to the Autumn Club members. She has been recognised as an important part of community life in Holywell and it is a well deserved honour.

FLINTSHIRE PARKINSON'S SUPPORT GROUP

Members are planning a full programme of meetings and activities up to September including :

- Thursday 28th May 12.30 pm for 1.00 pm
10th Anniversary Lunch at Beaufort Park Hotel
- Thursday 25th June 9.30 am
Trip to Llandudno – by minibus
- Thursday 27th August 12.00 noon
Trip to Afonwen Restaurant – by minibus
- Thursday 24th September 11.45 am
Talk by Consultant / Research Speaker



Lesley Butt, President of Mold Rotary Club presenting a cheque for £300 to Alfred Jones of Flintshire Parkinson's Support Group

PARKINSON'S^{UK}
CHANGE ATTITUDES.
FIND A CURE.
JOIN US.

RIGHTS, ADVICE AND INFORMATION SERVICE

RNIB Cymru is working with Action on Hearing Loss Cymru, Deafblind Cymru and Sense Cymru to provide information, advice and support to people with sensory loss in Wales

HOW WE CAN HELP:

- We can check that you are getting the benefits and concessions that you are entitled to and let you know about other services and support that is available to you in your area. We will arrange for any benefit application forms to be completed for you and provide support through the claim process.
- We also have a team of specialist case workers who will be able to support you in challenging the most complex of benefit decisions if your decision is wrong.

HOW TO CONTACT US:

Tel: 0333 323 0227
 Fax: 01248 353350
 Text Relay: 1800103333230227
 SMS: 07860 031200
RAISE@rnib.org.uk



FLINTSHIRE & WREXHAM ONLINE WATCH ASSOCIATION

Flintshire and Wrexham Online Watch Association are encouraging residents to sign up to Online Watch Link crime alerts system. This is a valuable free system that is providing people with information about ongoing crime in their areas.

The Association believes communicating to people who live in our communities following incidents of crime quickly is essential in helping keep crime down.

<http://www.fnwa.org.uk/owl/owl.png>

Alerts are circulated from North Wales Police, Trading Standards, Flintshire Local Authority, North Wales Fire and Rescue service and other partner organisations

Reducing Community Crime needs the community to participate.

For further information telephone 01352 708118 or email watch@owlcymru.org



HIGH SHERIFF AWARDS

The High Sheriff of Clwyd Awards were held on the 26th March at Coleg Cambria in Deeside and over 20 awards were given out by the High Sheriff recognising volunteers, community projects and philanthropy across North Wales. Local individuals, organisations and community groups that were recognised in Flintshire included:

- Richard Hayes who has volunteered for ten years as the Chairman for Daffodils (a registered charity supporting disabled children and their immediate families) and works tirelessly for the organisation.
- Dot and Alan Jones and their PAT dog Molly. They volunteer with the Pets As Therapy organisation, where Dot, Alan and Molly volunteer for four days a week visiting community centres, schools and many care homes to help bring comfort.
- Capricorn Animal Rescue and Sanctuary, which takes in over 3,000 animals a year and has a dedicated team of volunteers who provide care for the animals.
- Saltney Youth Council (pictured below) won a Crimebeat Award for encouraging young people to volunteer within their local community via the Summer Community Activity Programme and the Youth Council.



DRU YOGA AND RELAXATION

Suitable for all ages and abilities - at Parkfields Community Centre, Mold

Improve your flexibility, soothe your back, release tension and calm your busy mind with still, flowing therapeutic Dru yoga and relaxation.

SATURDAYS 10-11 am (no session on the last Saturday of each month)

TUESDAYS 5-6 pm

£3 / session (supported by Communities First, Mold)

For more info please contact

jill.blandford@yahoo.co.uk

mobile 07449 631 836



CREATIVE COOKS AT GREENBANK VILLA

Greenbank Villa's resident, Wayne Probert, tucks into the bonus feast cooked up by a fellow resident thanks to items donated by MoneySupermarket.com. Creative cooks at a supported living scheme for former homeless people in Flintshire were given a boost recently when MoneySupermarket.com donated ingredients to help them rustle up a feast.

The firm have offered to regularly share any of their surplus food items, (which are still within date), with the Greenbank Villas supported living scheme in Flint where former homeless people from across the county are able to gain skills and confidence helping them to rebuild their lives.

Debbie Davies, Senior Project Officer at the scheme said: "It's such a generous, and really practical help. Residents often get together for 'cook and share' sessions where they learn how to cook healthy dishes on a tight

budget and the support from Money Supermarket. Com meant we were able to transform a routine residents' meeting into a great feast with spaghetti bolognese and shepherds' pie cooked up by residents using the items donated."



Community Development Officer Louise Blackwell added: "The Team at MoneySupermarket.com have been fantastically supportive to many of our schemes helping homeless adults and young people across the area and their offer to share out any surplus food has been a real bonus."

MOLD COMMUNITY GARDEN

The Pathway Class from Maes Garmon visit the Community Garden on Tuesdays with their youth Beattie. The pupils come and work on their own plot and lend a hand around the Community Garden.

Tasks they have completed include : designing their own plot. making compost, digging, planting, making a cold frame from recycled plastic bottles, building a trellis using hazel wood and planting vegetables and flowers using the cold frame.

They use hanging baskets for the strawberries and potatoes are planted in a stack.

Community Garden volunteer Pat came in to teach the pupils how to make dream catches using willow and string and decorated using beads.

Each week they have a brief outline of tasks to be undertaken with additional creative projects to explore together. The photo shows a table made by recycling a wooden pallet. All pretty good work! This Community Garden is a credit to the willing hands of the Members and Volunteers of the Community Garden.

All the equipment for the Community Garden is material donated by TP, Mark Hammersley,

PLAS DERW TRUST - FOOD IN THE FOREST

- Plas Derw Trust have received funding from Awards for All Wales to run a food growing project. Food in the Forest sessions will take place at Cae Rhug farm, Gwernaffield every other Sunday From April until October then monthly over the winter. Sessions are FREE and open to all ages, families friends or individuals, anyone who would like to learn more about growing your own no matter how much room you have. Sessions will also include campfire cooking.

- See our website www.plasderwforestschoo.co.uk/food-forest for more information or call: 01352 840 955



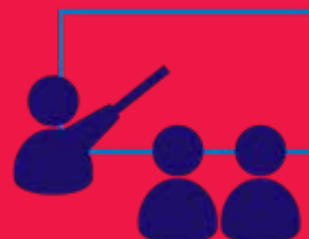
P&A Garden Supplies and our members and volunteers who work together to make this project a success. If you have any spare tools you are not using now please keep this project in mind and email angela.bebbington@sky.com



TRAINING

COURSES ORGANISED BY FLVC :

2nd June:	Health & Safety Level 2
8th June:	Supporting People to Get Online
25th June	First Aid for Adults
7th July	First Aid for adults



For further information or to book on to these courses please email Jane Hewson, Communications Officer – FLVC on : jane.hewson@flvc.org.uk

SELF MANAGEMENT COURSES

Do you have a long term health condition? If so, free online Self-Management Courses are available to help. The Online Course is an internet-based, interactive self-management tool to help people learn to manage the day-to-day issues associated with living with any long-term condition(s). You can now complete this course in the comfort of your own home.

The course can be particularly useful for those who have difficulty getting out of the house, live in rural areas, work full time or are in full time education or who would prefer to do the course online rather than face-to-face.

A user name and email address allows course participants to log on to the course remotely, 2-3 times per week, for a total of 2 hours each week. The course lasts 6 weeks and

participants can access the course at anytime and anywhere there is internet access.

Course participants learn to:

- Manage pain and extreme tiredness
- Cope with feelings of depression
- Relaxation techniques and exercise
- Healthy eating
- Action planning and problem solving techniques
- Communication skills with healthcare professionals, friends, family and colleagues.

For more information please call on 01286 674236 or e-mail eppcymru.bcuhb@wales.nhs.uk

INSTITUTE OF FUNDRAISING

SKILLS SESSIONS FOR FUNDRAISING - NORTH WALES REGIONAL GROUP MEETING

Contact Sion Edwards on edwardss@bhf.org.uk if you would like to attend Wednesday 10th June – Linked In Master class for Fundraisers RNLI Base St Asaph Business Park – 10am till 12pm.

GWYNT Y MÔR £19M COMMUNITY FUND MARKS DOUBLE MILESTONE AND LAUNCHES 1ST JULY 2015

Gwynt y Môr Offshore Wind Farm have announced a £570,000 donation to the RNLI (Royal National Lifeboat Institution) in North Wales and the appointment of Community and Voluntary Support Conwy (CVSC) to administer its multi-million pound Community Fund.

RESCUE SUPPORT VEHICLE

The substantial funding package for the RNLI will support a new rescue support vehicle to be based at St Asaph and pay for the training of all volunteer crews along the North Wales coast for the next five years.

In a separate arrangement, Community and Voluntary Support Conwy (CVSC) has been appointed to manage applications, award grants and, potentially loans, to community projects in North Wales from the rest of the £19m fund.

Gwynt y Môr is the world's second largest offshore wind farm, located more than eight miles off the North Wales coast.

POSITIVE IMPACT

RWE Innogy UK's Gwynt y Môr Project Director, Toby Edmonds said: **"The £19m Gwynt y Môr Community Fund will provide an opportunity to make a significant, long term and positive impact on sustainable development in Conwy, Denbighshire and Flintshire.** Through this partnership we look forward to continuing our work with the RNLI which has played a crucial part in the emergency response plan during the offshore construction of the wind farm. As Gwynt y Môr moves into its operational phase we are delighted to be showing our thanks to the RNLI with this legacy."

ESSENTIAL TRAINING

Matt Crofts, RNLI Community Lifesaving Delivery Manager said: 'Partnerships such as this are vital to the RNLI; we are so very grateful to have been chosen as benefactors. Training is the essential ingredient that turns our volunteers into lifesavers, but this kind of training is expensive. As a charity which relies on voluntary contributions and legacies, this most



generous donation will fund the training of the RNLI's voluntary crew off the north Wales coast for five years.

ENTHUSIASM

Commenting on the appointment of CVSC to administer the rest of the £19million Gwynt y Môr Community Fund, Toby Edmonds, added: "CVSC is experienced in local funding delivery, demonstrating huge enthusiasm for what the funds can achieve and a strong commitment

to ensure it helps support the delivery of strategic aims, as well as linking with and complementing existing funding provision and priorities in the area.

"We are looking forward to working with CVSC to develop the details of the application and decision-making process to allow the first round of awards to be made later this year."

The Chief Officer of CVSC, Wendy Jones said:

"We are thrilled to have won the contract to manage the Gwynt y Môr Community Fund. Working in collaboration with our colleagues in Denbighshire Voluntary Service Council and Flintshire Local Voluntary Council

We are confident that the benefit of this fantastic investment will be felt across the communities in the coastal areas of Conwy, Denbighshire and Flintshire, and will have a lasting effect on the strategic objectives of the area."

Information on the Gwynt y Môr Community Fund, will be widely publicised in due course.

FULLY OPERATIONAL

Gwynt y Môr is a greater than £2billion shared investment between RWE Innogy, Stadtwerke München GmbH, and Siemens and, once fully operational, will be capable of generating enough energy from home grown wind sources to power the equivalent of approximately 400,000 homes – around a third of the total number of homes in all of Wales.

For more information about Gwynt y Môr Offshore Wind Farm visit RWE Innogy's website:

www.rweinnogy.com/gwyntymor or contact june.brady@flvc.org.uk

'Some Very Poor Submissions!'

The Charity Commission has completed its annual monitoring report. They chose a random sample of organisations over a two year period from those over the £25000 threshold as these must submit Trustees Annual Report, Accounts and an Independent Examination/Audit report.

Period ended	2011-12	2012-13
Accounts of acceptable quality	54%	68%

7% of charities did not submit any form of independent scrutiny report and a further 9% submitted reports that did not comply with Commission requirements. These were either accountant's reports or what appeared to be independent examiner's reports, but with wording that did not meet the requirements of the Charities (Accounts and Reports) Regulations 2008.

Message to readers do not assume they are accurate – Message to Trustees if you are not sure ask for help.

The Charity Commission has timely updated its guidance Charity reporting and accounting: the essentials March 2015

All charities whether registered or not MUST produce accounts and make them available for public inspection.

Auto Enrolment Under 50 Employees

Your staging (start) date will be sometime between now and 2017. Check your staging date at : www.thepensionsregulator.gov.uk/employers/staging-date.

There are important implications for the employee and employer in terms of the level of contributions required so even if it is 2017 before you have to start check your likely employee eligibility now and the costs which will rise from 1% to 3% from October 2018 for the employer and 8% in total.

Gross Monthly Earnings	Age			Weekly Gross Earnings
	16 - 21	22 - SPA*	SPA - 74	
=<£486	Has the right to join a pension scheme			=<£112
£487-£833	Has the right to opt in			£113 - £192
>£833	Has the right to opt in	Automatically enrol	Has the right to opt in	>£192

The Easter break for those on financial year holiday calendars comes but twice a year this year from 3rd to 6th April, and then next year 25th to 28th March. So check your holiday policy!

Bye bye SORP
2005 and SAY hello to
SORP FRSSE or FRS102

IMPORTANT DATES:

31/05	Issue P60s by this date
06/07	Forms P9d, P11d To HMRC
01/10	National Minimum Wage to £6.70, £5.30 & £3.87

Statutory Payment Updates

The standard weekly rate of statutory maternity pay (SMP), statutory adoption pay (SAP) and statutory paternity pay (SPP) will increase from £138.18 to £139.58.

The weekly statutory sick pay (SSP) rate for days of sickness increase from £87.55 to £88.45.

In addition, the lower earnings limit applying to National Insurance Contributions, below which employees are not entitled to SMP, SAP, SPP and SSP, increased from £111 per week to £112 per week.

And one not to like the Statutory Weekly Redundancy Pay increased from £464 to £475. This means that the maximum statutory redundancy payment has increased from £13,920 to £14,250.

Do not pay the penalty ... Register on the Gateway

..... HMRC RTI submissions are now liable to automatic penalties as are late payments. Register on the Government gateway dashboard to see liabilities and previous payments, allocations.

www.gateway.gov.uk/



Quality printing for everyone

DID YOU KNOW.....?

We can laminate your A4 documents from only 40p and A3 for 80p.....

We can comb or wire bind your documents from as little as 60p, including clear plastic cover and card backsheet.

And as we can print your documents for as little as 6p per sheet why go anywhere else?!

Need some letterheaded paper but you don't want to order a thousand at a time? Why not try our full colour headed paper on 100gsm coated at just £19 for 100.

Need to advertise your summer fête – why not have one of our scrim vinyl banners 4ft x 2ft for £24, 6ft x 2ft for £36? We do many other sizes too so why not ask for a quote?

Need a menu for your café? Need a price list for your bookshop? Why not make The Printroom your first port of call?!



For more information and quotes, please contact us on 01352 744031 or email theprintroom@flvc.org.uk

AND FINALLY...

A number of FLVC staff have been attending a Basic British Sign Language Course. Many thanks to our visitors for supporting our learning!



BSL